

# About Us

**The Internationaler  
Bund at a Glance**



# The Internationaler Bund (IB)

With more than 14,000 employees, the Internationaler Bund (IB) is one of the large service providers in youth, social and educational work in Europe. It supports children, young people, adults and seniors in leading a self-responsible life - regardless of their origin, religion or ideology. Its guiding principle, „Strengthening Being Human,“ is the motivation and orientation for its employees.

The Internationaler Bund (IB) was founded in 1949. In its youth community organizations it housed tens of thousands of young people who had no parents, no homes and no jobs and gave them new perspectives. Today, the IB is a large and efficient organization with decades of experience with people in difficult life situations, which is socially committed and assumes social responsibility. It maintains almost 900 facilities at 300 locations nationwide - including its own schools, academies and universities. The group's headquarters are located in Frankfurt am Main (Germany).

## What the IB stands for

- 4 Sustainability
- 5 Rights and Protection of Children and Adolescents
- 6 Inclusion
- 7 Gender Sensitive Work at the IB
- 8 Action against Poverty
- 9 Voluntary Services
- 10 The IB Foundation
- 11 The Foundation Schwarz-Rot-Bunt

## Social Work

- 12 Child Development and Education
- 13 Programs for Children
- 14 Educational Support for Young Offenders
- 16 Youth Social Work
- 17 Migration and Integration
- 18 Support to Refugees
- 19 Support to Schools
- 20 Support to People with Disabilities
- 21 Vocational Rehabilitation
- 22 Assisting Senior Citizens
- 23 Elderly Care

## Education

- 24 Language Training
- 25 Democracy Promotion
- 26 Civic Education
- 27 Career Guidance
- 28 Vocational Training
- 29 Support for Trainees and Companies
- 30 Professional Development
- 31 Further Education, Retraining, Continuing Education
- 32 IB Schools

## International Cooperation

- 37 International Cooperation
- 38 International Youth Work
- 39 International Volunteer Services
- 40 International Migration Services
- 41 Foreign Subsidiaries
- 42 International Networks

### Sustainability

The transformation to a sustainable society is one of the big challenges of our time. The commitment of the Internationaler Bund to sustainability is one of its core values and based on the UN's „Agenda 2030“ with its 17 sustainability goals and the “Education for Sustainable Development“ program. Our aim is to direct all our activities toward a responsible use of finite resources, so that present and future generations can live in safety and dignity. We are part of a global movement that promotes this transformation to sustainable action.

Sustainability is increasingly anchored in our strategic goals, processes and business activities. In this context, social, ecological, economical and cultural dimensions are all taken into account in equal measure. As an education provider, it is particularly important to us to integrate education for sustainable development and the promotion of creative competence among children and young people into our programs.

Our commitment to sustainability is one of our core values and based on the „Agenda 2030“ of the UN with its **17** Goals for Sustainable Development and the Education for Sustainable Development Strategy



### Rights and Protection of Children and Adolescents

Children and adolescents have the right to a healthy upbringing, to physical integrity, mental well-being, and support of their personal development. According to the principles of the Internationaler Bund, we especially focus on the improvement of real life-, educational-, and developmental opportunities based on the UN Convention on the Rights of the Child and all provisions for the safeguarding of children's rights and the protection of children and adolescents. The IBs pedagogical work with children, youth and families is all about supporting these rights.

Furthermore the IB develops new standards, concepts and guidelines for the protection of children and adolescents in various initiatives, which are applied in its organizational units. Conferences and training courses ensure a regular exchange of information among experts and multipliers in the field of child protection.





No one should be marginalized or excluded

## Inclusion

### We Create Space for Diversity

— 6

Inclusion is the natural and equal participation of all people in all areas of social life. No person should be marginalized or excluded. The Internationaler Bund sees as its main tasks the empowerment of people to shape their lives in a self-determined way and to support (social) diversity. We create optimal conditions for inclusion, so that people with disabilities, for example, can decide for themselves where they want to live and work; immigrants and their descendants receive equal opportunities in education, and people are not discriminated against because of their sexual orientation.

Our employees live and experience inclusion as an important part of our corporate culture. Therefore, we have created internal structures in all our organizational units that promote and strengthen diversity. Thus, all employees have equal opportunities to be a valuable part of the community in a self-determined, equal and unrestricted way.

## Gender-Sensitive Work

Gender-sensitive work describes a basic professional attitude. This applies to all IB-employees and is implemented in all offers and areas of activity. The guideline „Enabling self-determined sexuality and respecting boundaries in the IB“ sets standards, especially in the area of sexual education, and shows how this attitude is applied at work.

The IB provides girls and women as well as boys and men with specific offers for gender-sensitive development. There are also offers for queer youth and trans persons as well as various projects for a gender-sensitive pedagogy, especially in child and youth welfare. Once a year a conference is held to inform about new offers and best-practice examples in the IB and provides up-to-date expert knowledge via lectures on gender sensitive work.

— 7





## Action Against Poverty

Current data show that many societies are deeply divided in terms of material and living conditions. More and more people are affected or threatened by poverty, while at the same time a few are getting richer and richer. This leads to social inequality and personal hardship.

— Since its foundation, the Internationaler Bund has been committed to supporting socially disadvantaged groups. In order to improve the situation of these people, the IB is dedicated to preventing and combating poverty, especially through debt counseling, support to the homeless, education, early assistance for families, and socio-educational services in socially deprived areas and in problem-ridden urban districts and rural regions. To combat poverty effectively, the IB is committed to reliable education, social support and a consensus for social coexistence in society that provides equal dignity and participation for everyone.

8

## Voluntary Services

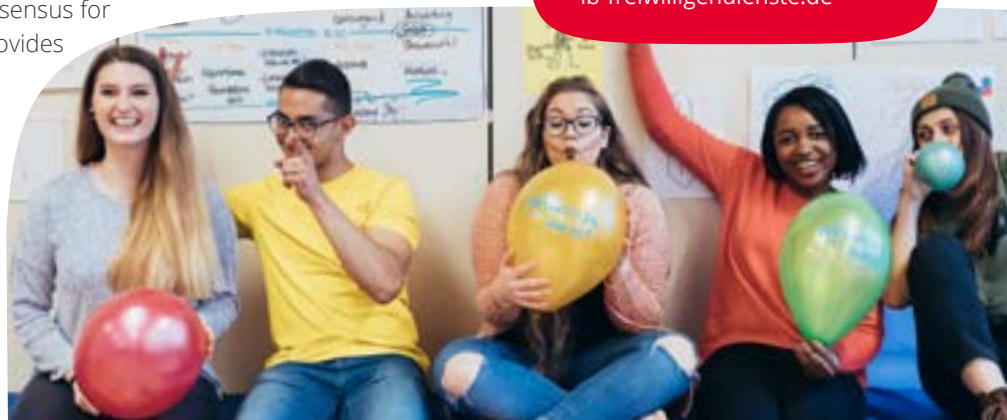
Growing personally while helping others is an experience younger and older people can have as volunteers. The IB offers a wide range of opportunities to do so at home as well as abroad.

Young adults can complete a Voluntary Social Year or a Voluntary Ecological Year. There are also voluntary opportunities for all age groups. Volunteers work in facilities for children and young people or for people with disabilities, for sick and elderly people, for drug addicts, or in environmental and animal protection facilities. With the development cooperation volunteer service and the International Youth Volunteer Service there are excellent assignments abroad.

9

Further information on places of operation, application modalities and more is available at:

[ib-freiwilligendienste.de](http://ib-freiwilligendienste.de)



## The IB Foundation

The IB Foundation focuses on the human being. It represents the values of the IB and builds bridges between the individual fields of expertise of the IB and external partners from business and civil society. Our employees maintain a lively dialog with the actors of numerous networks in order to further develop socially relevant topics to promote sustainable cooperation. The IB Foundation is also a source of inspiration and a thinking partner for people and companies who want to get involved in corporate social responsibility. It acts as a donation platform for projects. As a foundation with legal capacity it is able to accept and manage a large number of trust foundations and endowment.



## The Foundation Schwarz-Rot-Bunt

**For Integration, Solidarity and Acceptance**

Dealing with socio-political issues is part of the IB's understanding of education and is therefore anchored in all its working areas. With the foundation of the initiative „Schwarz-Rot-Bunt. The IB pro Democracy and Acceptance“ in 2002, important preconditions for the ongoing development of the educational field were created. The goal is to raise awareness for the fundamentals of democracy and its challenges among children, young people and adults. To this end, target group-specific approaches and materials have been developed.

The initiative's work was expanded with the establishment of the non-profit foundation Schwarz-Rot-Bunt in 2012. It promotes the peaceful coexistence of people from different cultural backgrounds. Top priority is to practice democratic behavior as to create a basis for acceptance and respect for the diversity of people. All the foundation aims at is to counter all forms of extremism and violence and to support the development of participation and involvement in society. Therefore, the IB also provides annual funding for innovative acceptance-projects pro democracy and acceptance.



## Programs for Children

Education, care and upbringing of children is a task for society as a whole. The IB meets this challenge nationwide with its crèches, kindergartens, daycare centers, after-school care centers and further daycare options. Further offers are available in all-day elementary, children's houses as well as children's and family centers. The IB supports children in developing their personality, their talents and their mental and physical abilities individually and comprehensively. The goal is to care for children according to their needs, requirements and development, to accompany them in their (self-) education process and to give an impulse to activate their urge to learn and explore.

The IB is characterized by its holistic, co-constructive and life world-oriented approach, which includes the Education for Sustainable Development Program (ESD). At the center of these learning processes is the child with its uniqueness, his or her individual abilities and talents and its development in the community.

## Open Child and Youth Work

**For an Active, Creative and Self-Determined Leisure Time**

Our Open Child and Youth Work facilities are diverse and colorful: They include children's and youth centers, adventure playgrounds, open houses, meeting and communication centers, neighborhood centers, and mobile and clique-oriented project work.

Open Child and Youth Work is aimed at all children, adolescents and young adults who want to organize their leisure time actively, creatively and in a self-determined way. Principles such as openness, voluntariness, flexibility as well as „need and life world orientation“ form the basis of the pedagogical work in order to strengthen the emotional, personal and social competences of children and young people. The Open Child and Youth Work supports them in taking responsibility for themselves and others and in actively shaping their own social life.





being of the children and young people always comes first.

Young people and their parents also find support for their personal life situation in many other settings, such as day groups, educational counseling centers or social-space-oriented projects. Participation assistance in schools and daycare centers has grown steadily in the last years.

To ensure that the assistance is sustainable, the IB attaches great importance to the participation of all those concerned in the design of the assistance, as well as to good support in transitional situations and to a holistic view of the families, the young people and their environment.

## Educational Support

### Support and Shelter for Children, Youth and Families

There are 350 IB educational support services all over Germany, with a wide range of outpatient, day care and inpatient services.

For young people who are temporarily or permanently unable to live with their families, the IB's inpatient living arrangements are an important offer. They are designed in different ways to meet the needs and individual life situations of the young people - from cross-age residential groups to the family setting in specialized educational centers.

A variety of outpatient services, such as social pedagogical family assistance, support families who find themselves in difficult life situations. Within the framework of this assistance, the entire family is often involved over a longer period of time where the well

## Support for Young Offenders

The IB's services for young people who have become delinquent are an adjoining field to educational support. Adolescents and young adults are encouraged and supported to lead a self-determined life, to develop (new) perspectives and a sense of responsibility for their actions.





## Youth Social Work

### Empowering Young People for Life and Work

Developing new perspectives with young people in difficult life situations is the goal of Youth Social Work at the IB. To help young people to successfully master their school time, and to also support them in realizing their own ideas, desires and abilities in other areas of life, the Internationaler Bund is active in more than 650 schools in over 200 communities.

The services offered are based on work- and life-world-related approaches - provided by competence agencies, counseling centers, residential youth facilities, fan projects and streetwork. In this way, young people who are at risk of dropping out of the system are also reached. The socio-spatial orientation of the facilities also plays an important role, because the social environment of young people is key in order to find joint solutions. In some areas, the IB - on behalf of the public sector - takes over the entire offer in the social area or neighborhood.

## Migration and Integration

As a socio-political actor and provider of youth, social and educational work, the IB is actively involved in shaping the immigration society. Education and work are key for gaining a foothold in our society.

Education and work are key for gaining a foothold in our society

The youth migration services therefore support young people with and educational opportunities to seize their chances in Germany. The „Youth Migration Services in the Neighborhood“ and the projects of the „Social Cohesion“ program are socially relevant and support the creation of a peaceful coexistence of people who where at home here from the beginning and those who are newly immigrated. The offers contribute to enabling people with migration biographies and flight histories to participate in our society on an equal footing.



## Support to Refugees

Since its founding in 1949, the Internationaler Bund has offered help to refugees. Nobody leaves his home country without a reason. People flee from war, persecution, terror or poverty, some fear for their own lives or the lives of their loved ones. For many, the flight is traumatic. Arrived in Europe, people hope for security and peace.

With its offers, the IB helps people to build a new life, while taking individual needs of unaccompanied minors, women, couples, single parents and families into account. The IB professionals meet the people at eye level and support them in leading as independent and self-determined a life as possible. This includes participation in social and cultural life, for example through education, professional integration and the organization of leisure time. In public, the IB advocates for the interests of people who fled from home and promotes social networks for an inclusive culture of welcome. By the task of welcoming refugees in Europe and integrating them into society, the IB also serves as a reliable partner for the official authorities.



## Support to Schools

### Helping to Shape School as a Place for Learning and Living

Schools should be geared to the individual resources and needs of children and young people and be both a learning and living space for them. To achieve this, school as well as social and recreational education programs must be systematically interlinked. When schools and youth services work together, young people receive the best possible support - also in terms of inclusive school development.

The IB has been an important partner of all-day schools for many years and thus supports schools as a place of learning comprehensively through various offers in school social work, educational support, disability support, political education, open child and youth work as well as child support and child education. Through close networking with the respective social area, children and adolescents have access to extracurricular activities, and all-day schools have the opportunity to become involved in the learning environment.





## Support to People with Disabilities

### Enable Inclusion

—  
20

For the inclusion of people with disabilities to succeed, existing barriers in all areas of society must be dismantled: Prejudices in people's minds as well as structural and technical barriers and barriers to communication. People with disabilities have the right to equal access to public life. Their participatory social involvement must be ensured. The IB wants to contribute to this goal with its offers and uses its many years of expertise for this purpose. At the same time, the services for people with disabilities are constantly being further developed. With increasing inclusion, existing structures must also change. The goals are independence and participation without excluding conditions. The aim is to create services that focus on individual needs. Also people with disabilities should be able to retain their familiar social environment.

## Vocational Rehabilitation

### Qualification of (Young) People with Disabilities

—  
21

Young people with impairments can do vocational training at the IB that is oriented toward technical skills. Depending on individual ability and necessary support, the IB offers two options: In the integrative or cooperative rehabilitation training the specialized practical training takes place either in an IB facility or in cooperative companies on the primary labor market. In both cases, the theoretical input is provided by the vocational school. The IB supports the trainees through socio-pedagogical and psychological guidance as well as supporting lessons and remedial teaching. In addition, the IB offers young people with disabilities further opportunities for vocational qualification and integration into the general labor market. These include, for example, „Supported Employment“, „Diagnosis Labor Market Capability“ and other alternative offers than qualification and employment in a workshop for people with disabilities.

## Assisting Senior Citizens

### Open Assistance and Assisted Living

Many elderly people want to live in their familiar surroundings and in close contact with their families, friends and acquaintances as long as possible. The IB supports this desire for a self-determined life despite increasing need for assistance and care through „open assistance“ and „assisted living“. Assistance includes services such as cleaning, cooking, washing, ironing, accompaniment to the doctor or shopping and the opportunity to take advantage of public recreational and educational offers. If required, home emergency call systems are also available. Outpatient preferred to inpatient: In assisted living, elderly people can receive the same services as in outpatient care - but can also receive additional care.



## Elderly Care

In outpatient, full and partial inpatient care, the IB places great emphasis on preserving the concerns, dignity and well-being of the elderly. In the inpatient facilities, people in need of care can choose between single and couple rooms, which meet the latest barrier-free standards. Depending on their personal needs and possibilities, they can participate in the life of the house or apartment community. The facilities and services are designed to meet the needs of the residents in terms of care, nursing and house-keeping. They include their social environment and maintain contact with members of the community, such as child care centers, open meetings, mobile help, day care and neighbors. The services and facilities are regularly audited through the IB's own nationwide quality management system (according to EFQM).



## Language Training

**More Opportunities for Participation in Life, Society, Education and Work**

Learning the German language is key to a self-determined life in Germany. For decades, the IB has therefore supported immigrants in building up and expanding their language skills with a wide range of language courses for general and job-related German as well as integration and professional language courses. The IB conducts recognized language examinations at various levels. In addition, it promotes good teaching quality with accredited continuing education courses for German teachers.

For low-literate adults with German as their language of origin, the IB offers various literacy and basic education programs. As a partner of AlphaDekade - a national initiative of the federal government, the states and partners to promote adult literacy and basic education in Germany - the Internationaler Bund also actively advocates for better participation of low-literate adults.

—  
24



To promote democracy, civic education is needed

## Democracy Promotion

Democratic values and human rights are the basis of all offers of the IB. To actively represent and communicate these values is a task of all areas in the IB, especially political education. To promote democracy, civic education is needed. The IB focuses on people's rights of self-determination and participation and enables them to experience democratic processes. In this context, the IB participates in the federal „Respect Coaches“ program to promote young people's understanding of democracy in schools. Specially trained pedagogical staff work preventively with young people to protect them from extremism, racism and group-related hostility. They address topics such as human rights or strengthening intercultural and interreligious competencies, sharpen the students' understanding of democracy and promote class cohesion. The goal of the program is to broaden the students' perspective, to make them better understand different world views and lifestyles, and to actively stand up for a respectful, peaceful coexistence.

—  
25



## Civic Education

**For Democracy to Become a Matter of Course, Civic Education is Needed**

Democracy is not a matter of course, but must be constantly lived, protected and promoted. Civic education of this kind aims to identify social developments, to reflect on one's own attitudes and to promote critical thinking. It is about actively dealing with the constantly changing social, ecological and economic demands of society. The IB's political education encourages people to actively participate in society.

In terms of political programming, civic education work is impartial - but not neutral. It is based on democratic values and human rights. Civic education is therefore an important tool for countering any anti-democratic tendencies as well as the various forms of populism, extremism and racism.

## Career Guidance

**Promotion into Employment**

What to do after school? The IB answers this basic question of young people with various offers. This includes **vocational preparation**, in which young people with initial difficulties qualify for an apprenticeship. There is also action- and practice-oriented vocational training - a **career orientation program** run by the federal government in cooperation with schools - in which young people from the 7th grade onwards can explore their skills, aptitudes and strengths. In the **vocational guidance support program**, pedagogical staff accompany and support students individually from school to vocational training. Some federal states have other special programs to help young people start their careers. There, the IB is active as a cooperation partner at schools. The important thing with these offers is that the young people get to know different occupational fields and activities. This also includes a potential analysis.

What to do after school?





## Vocational Training

### A Second Chance: Training at the IB

— 28

Young people who cannot find a regular apprentice position can do a „vocational training in external facilities“ at the IB. They are supported by an experienced team of instructors, teachers and pedagogical staff during their training, for example through tutoring in theory and practice, through preparation for the intermediate and final exams, but also when dealing with everyday problems or conflicts with teachers and parents. The goal is to complete a vocational training, either in an IB training center or in a company in the primary labor market.

## Support for Trainees and Companies

### Completing the Training

— 29

Through assisted training the apprentices are supported to achieve a vocational qualification in an unsubsidized training program. The aim is to prevent apprentices from dropping out by providing support and remedial instruction in vocational theory and to help overcome exam anxiety, organizational hurdles or conflicts at the training place. The trainees are given individual socio-educational support according to their needs and get assistance if they feel overwhelmed by the requirements. The training companies can also make use of the IB's offers to ensure a conducive climate at the workplace. If they want, young people can also receive support in their transition to working life after successfully completing their training.



## Activation and Placement Support

### Back to the Job Market with Confidence

In the difficult search for a job, unemployed people often lose confidence in themselves and in society. The IB helps them find their way back into working life and to regain courage. The measures for people looking for a training position, for people threatened by unemployment or unemployed people include individual support to enable the most suitable possible integration into the labor market. Our specialists help them to look for jobs, develop their own professional profile, write meaningful applications and prepare for tests and interviews. In doing so, each person is advised and accompanied according to their individual issues and needs.

## Further Education, Retraining, Continuing Education

In order to meet the demands of the labor market, it is necessary to continually adapt and retrain professionally. Particularly in the course of the digital, ecological and demographic transformation of the economy, employees are fundamentally dependent on further vocational training to maintain their jobs or their ability to exist on the labor market.

The IB offers a wide range of vocational training, retraining, partial qualification, adaptation and upgrading qualifications. Closely aligned with the needs of people and companies, this guarantees a high degree of practical relevance and rapid adaptation to a world of work that is constantly changing.

The IB helps people find their way back into working life







## IB Schools

### General Education Schools

The IB operates three independent general education schools nationwide:

The IB Cooperative Comprehensive School Stella (KGS) in Neubrandenburg in Mecklenburg-Western Pomerania is a reformed educational school according to Montessori. With the elementary school, a secondary school and the upper secondary school unite successive school levels up to the general university entrance qualification under one roof. The all-day education and care concept is complemented by an after-school care center from the first grade on.

The IB-Realschule in Asperg in Baden-Wuerttemberg enables children and young people from grades five to ten to acquire the intermediate school leaving certificate. As an all-day school, the students have access to structured all-day care five days a week as well as lunch.

In addition to many practical vocational offerings, the program includes remedial classes, homework assistance, and vocational, sports, and cultural courses.

At the Neuenhagen secondary school in Brandenburg, with grades seven to ten, the focus is on systematic career and life planning and preparation for working life. Small class groups with up to 20 students allow for enable targeted support and development. The open school atmosphere and additional socio-educational support help the young people to achieve the goals they have set for themselves.

### Vocational Schools

The vocational schools offer young people promising educational and development opportunities. The aim is to implement the IB motto „No degree without connection“. Children and young people who are looking for alternatives to the public school system are in good hands here: the model school system, which builds on each other and is permeable, enables individually designed educational careers and important school-leaving qualifications.

Vocational schools, vocational colleges, specialized secondary schools and vocational high schools are just a few school types from the diverse range of the 35 vocational schools run by the IB. The variety of educational opportunities reflects the different talents and abilities of young people. They all want to give young people a professional future - by helping

No degree without connection



them to start a vocational qualification, an apprenticeship or via further education.

In the IB's vocational schools, students choose focal points in terms of content, for example business, social work, health or media technology. This gives them direct access to the world of work and professional practice. They can choose between a vocational high school with the possibility of a high school diploma, a vocational school or an apprenticeship in the field of care and social work.

### Medical Academy

For more than 40 years, the Medical Academy has offered a wide range of in-depth training in the fields of health and social care at 17 locations and 34 schools in Germany. Classes for occupational therapy, speech therapy, physiotherapy, nursing or social professions, take place in a familiar learning atmosphere. Diversity, participation, appreciation, tolerance and self-confidence characterize the offerings. A cooperation with Erasmus+ - the European Commission's Programme for education, training, youth, and sport - allows students to participate in projects and internships. Another special feature is the possibility of studying alongside in cooperation with the IB University of Applied Sciences. Trainees in occupational therapy, speech therapy and phy-

siotherapy can study applied therapy science for six semesters during their training and then complete their studies in three semesters while working.

### Higher Education - Theory and Practice go together

The IB Universities in Germany are state-recognized, private universities that are distinguished by their practical relevance. The different forms of study, full-time, accompanying vocational training or apprenticeship, not only ensure an optimal combination of vocational and higher education. Students can also flexibly adapt their studies to their life situation and their career. The institutes offer degree programs and continuing education with a focus on management, health and social sciences located in Berlin, Hamburg, Cologne, Munich, Stuttgart and Mannheim. The different forms of study - full-time, accompanying vocational training or apprenticeship - not only ensure an optimal combination of vocational and university education. Students can also flexibly adapt their studies to their life situation and their career.

The University of Applied Management Studies (HdWM) in Mannheim offers degree programs with a management focus as well as continuing education for specialists and managers. The IB University for Health and Social Services in Berlin with further study centers in Hamburg, Cologne, Munich and Stuttgart specialize in studies and scientific training in the health and social sciences.



Since its foundation, the IB has been committed to a non-partisan and non-denominational work in the sense of an international partnership. Therefore, the IB promotes global understanding and tolerance in all areas of culture and education as well as in the social field. We support people around the world to participate in social and economic progress through international cooperation.

The consequences of climate change and globalization affect people all over the world. As part of our international work, we are working with international partners to find ways in which targeted collaboration can succeed. We are committed to the 2030 Agenda and to socially, economically and ecologically sustainable development. In order to meet societal challenges such as migration and flight, but also to address skills shortages caused by demographic change, the IB is fulfilling its international mandate and contributing to the achievement of the UN's global Sustainable Development Goals (SDGs). With its offerings in education and social work, the IB is active in more than 60 countries in Europe, Africa, Asia as well as in North and South America.

## Development Cooperation

More than 65 years of experience in project management and a track record of more than 10,000 successfully implemented programs and projects worldwide are proof of IB's expertise in project development and implementation abroad. Based on our experience, we are today a reliable partner of bilateral and multilateral cooperation and donor organizations such as the European Union and the German Federal Ministry for Economic Cooperation and Development. Established partnerships also exist with the Swiss Agency for Development and Cooperation, the Federal Ministry of Education and Research, the Deutsche Gesellschaft für Internationale Zusammenarbeit, sequa gGmbH and the World Bank. Our technical focus is particularly on early childhood development, basic education, vocational training, higher education, employment promotion and social integration of disadvantaged people.

Part of our International Cooperation is to find ways in which targeted global collaboration can succeed



## International Youth Work

Since its foundation, the IB has been doing international exchange programs with young people in order to strengthen the mutual understanding of young people from different countries and cultures. The focus is on young people with special needs. They benefit particularly from this exchange: while confronted with foreign and unfamiliar situations, they reflect on their own cultural identity. In the process, they learn tolerance and acceptance, also towards their fellow citizens in their home country. They also deal with their career planning and future prospects, discuss their understanding of democracy and gain self-confidence. The IB also organizes an international exchange for professionals so that they can learn from and with experts from other countries and cultures. Different approaches, methods and instruments from different fields are presented and discussed, and knowledge and experiences are shared. Topics such as civic education and democracy development are also part of the program. Important European and international developments thus find their way into the participants' own agendas.



## International Volunteer Services

The IB has been accompanying voluntary services for young people for more than 50 years. Here, people under the age of 27 can volunteer for a certain period of time (usually 12 months) in social and ecological areas as well as in culture and sports worldwide.

In accordance with our mission statement, we motivate people through volunteer services to develop freely, shape their own lives, integrate into society, assume personal responsibility and actively participate in the development of society in Germany, Europe and worldwide. According to the motto „I win, you win“, our volunteers are not only actively committed to their fellow human beings and their social environment, they also have the opportunity to gain valuable experience and to develop their personal and social skills.

The IB strengthens the mutual understanding of young people from different countries and cultures



## International Migration Services

Since 2011, the IB has helped more than 300 people a year from abroad to start a career or to train in Germany. Our goal is to ensure a fair and ethical recruitment of nurses and other skilled workers from abroad. For a sustainable integration in Germany to succeed and for these people to feel welcome in our country, the IB offers modular services such as integration courses, accommodation, half board, leisure activities and help in dealing with authorities. The professionals learn German in intensive language courses and live in hotels, host families or in houses and apartments offered by the IB. We want to strengthen humanity and are consistently implementing this goal with this offer as well.

The "Fair Recruitment Healthcare Germany" seal of approval by the German Federal Ministry of Health made clear

The IB is the first non-profit organisation in Germany awarded with the „Fair Recruitment Healthcare Germany“ seal of approval

how successful our commitment is. One of the criteria of the seal of approval is compliance with international standards, which is very important to us.

## Foreign Subsidiaries

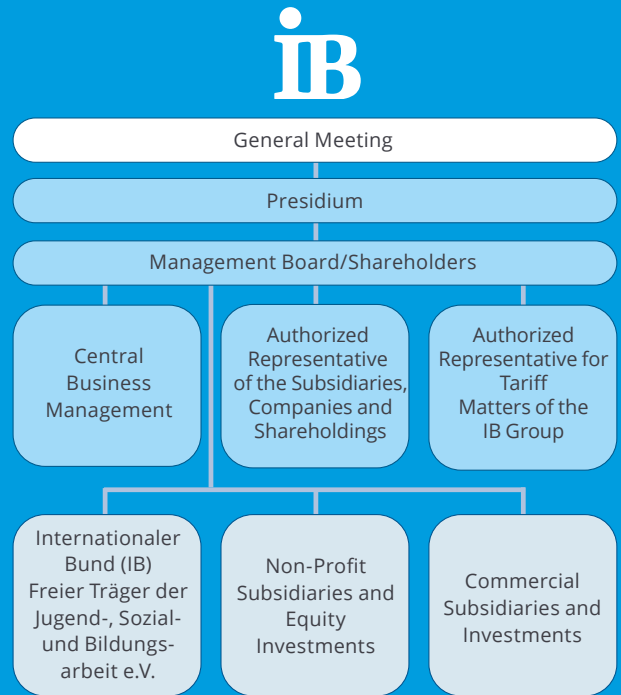
With its subsidiaries abroad, e.g. in Switzerland, Poland or Turkey, the IB offers services and consultancy in all areas of its portfolio. For example, the IB supports people who have fled from the war in Ukraine to Poland, and maintains one of the largest all-day schools in the Caucasus in Tbilisi, Georgia.



## International Networks

The IB has been a member of various international networks in the field of social development and education for many years. These include the BvBBI, the Bundesverband Berufsbildung International, the German umbrella organisation for Vocational Training Organisations active worldwide, VENRO, the umbrella organisation for development and humanitarian work organisations in Germany, the YES Forum - a European Network working with and for young people, and the EVBB, the European umbrella association of institutes for vocational training. Such networks not only give the IB access to international institutions, they also raise its profile at the international level and demonstrate its role as a service organization in virtually all areas of education and social work.

## IB Structure



Internationaler Bund (IB)  
Headquarters: Frankfurt am Main, VR 5259  
Publisher: Thiemo Fojkar,  
Chairman of the Board  
Valentin-Senger-Str. 5  
60389 Frankfurt am Main · Germany  
Fon +49 69 94545 0 · Fax +49 69 94545 280  
info@ib.international · www.ib.international

